

# Klein-Aus Vista

2 km west of Aus – 120km East of Luderitz in the Aus Mountains

Piet Swiegers: 063 258116

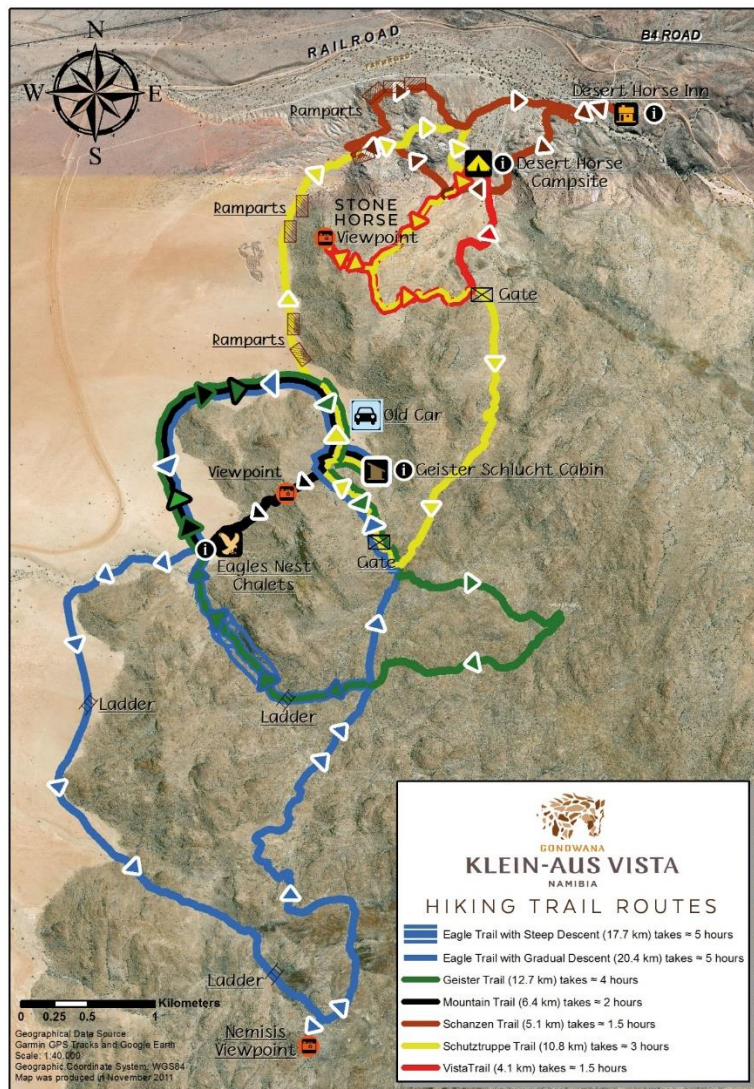
<http://www.klein-aus-vista.com/activities/>

## Activity 1: Hiking - self guided: <http://www.klein-aus-vista.com/activities/hiking/>

For nature-and adventure lovers, we offer various marked hiking trails which guide you through the wildly romantic scenery of the Aus Mountains to explore the flora and fauna of the Succulent Karoo desert. The trails cater for both beginners and experienced hikers and we have six different hiking trails to choose from.

To take part in a self-guided outdoor activities one would need a park permit and can be purchased at the Desert horse Inn reception and cost N\$50 pp valid for the duration of your stay. You will receive a comprehensive activity booklet with trail maps and description of the different trails.

**Duration of the activity:** There are six different hiking trails to choose from. They are well marked and take you through the wildly romantic scenery of the Aus Mountains. Duration: between 2 and 5 hours.



## 1: Schanzen Trail

- Colour Code: Brown Arrows
- Distance: 5.1 km
- Duration: approximately 90 minutes
- Grading: Easy to Intermediate: (Altitude 1400 m at the Desert Horse Inn – Altitude 1400m at highest point +/- 200m altitude gain in Total)
- Main Attractions: Desert Vistas and Ramparts dating back to WW1



## 2: Vista Trail

- Colour Code: Red Arrows
- Distance: 3.2-6.8 km
- Duration: approximately 90 minutes
- Grading: Easy to Intermediate ( Altitude 1350 m at the Campsite, altitude at the Desert Horse Inn-1380m – Altitude 1550m at highest point +/- 250m altitude gain in Total.)
- Main Attractions: Desert Vistas and Stone Horse '/ui häb' from view point. A 80x140m galloping horse land art that has been set in stone on the desert plains.





### 3: Schutztruppe Trail

- Colour Code: Yellow Arrows
- Distance: 10.8 km
- Duration: approximately 3 hours
- Grading: Easy to Intermediate (Altitude 1350 m at the Campsite – Altitude 1550m at highest point +/- 450m altitude gain in Total.)
- Main Attractions: Desert Vistas and Stone Horse 'ui häb' from view point and bullet riddled Hudson Terraplein from diamond smugglers & Ramparts dating back to WW1.





#### 4: Mountain Trail

- Colour Code: Black Arrows
- Distance: 6.4 km
- Duration: approximately 2 hours
- Grading: Intermediate to Advanced (Altitude 1250 m at Eagles nest – Altitude 1550m at highest point +/- 300m altitude gain in Total.)
- Main Attractions: Desert Vistas with the view on Eagles Nest chalets and bullet riddled Hudson Terraplein from diamond smugglers



#### 5: Geister Trail

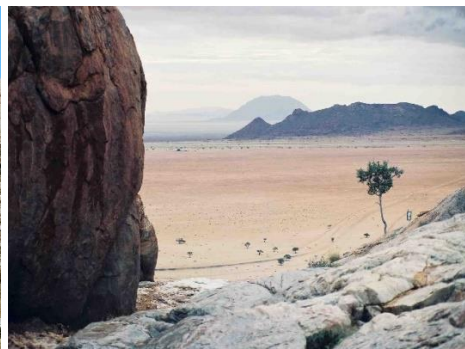
- Colour Code: Green Arrows
- Distance: 12.7 km
- Duration: approximately 4 hours
- Grading: Intermediate to Advanced (Altitude 1320 m at the Geister Schlucht – Altitude 1600m at highest point +/- 500m altitude gain in Total.)
- Main Attractions: Desert Vistas, bullet riddled Hudson Terreplein from diamond smugglers, Geister Schlucht valley and Dieprivier Canyon





## 6: Eagle Trail

- Colour Code: Blue Arrows
- Distance: 17.7 km or 20.4 km
- Duration: approximately 5 hours
- Grading: Intermediate to Advanced (Altitude 1250 m at the Eagles nest – Altitude 1700m at Nemesis Viewpoint +/- 600m altitude gain in Total.
- Main Attractions: Desert Vistas, Nemesis Viewpoint and Diep rivier canyon



**Activity 2: Mountain biking- self guided:** <http://www.klein-aus-vista.com/activities/mountain-biking/>

Namibia stands for endless horizons, wilderness and beautiful natural settings. An excellent way to experience the stunning nature of Namibia is to go on a mountain bike ride through these wide and mountainous landscapes. We laid out different trails on our land which cater for intermediate to advance mountain bikers and guide you through the wild romantic scenery of the Aus Mountains in Gondwana Sperrgebiet Rand Park and the neighboring Farm Kubub. Our trails lead you through the impressive biodiversity, geology and historical sites of the area.

To take part in a self-guided outdoor activities one would need a park permit. The permit can be purchased at the Desert horse Inn reception and cost N\$50 pp valid for the duration of your stay. You will received a comprehensive activity booklet with trail maps and description or the different trails. Ask for Piet to assist you to access your skill & fitness level to ensure you take on the right trails.

If you do not have your own MTBike, we also offer dual suspension Mountain Bikes for Rent: N\$400 per day.

**Duration of the activity:** There is a choice of different routes and lapses: varying from 18km, 64, 97km. They are well marked and take you through the wildly romantic scenery of the Aus Mountains



**1:Orange Arrow Routes**

*Colour Code: Orange Arrows*

*Distance: 18-27 km*

*Elevation Gain: 377-500m*

*Duration: 1h00 to 2 hours*

*Grading: Intermediate to Advanced*

*Start: Desert Horse Inn Parking Area or Campsite*



## 2:White Arrow Routes

*Colour Code: White Arrows- Klein-Aus Vista Trails*

*Distance: 18-64km*

*Elevation Gain: 377-1300m*

*Duration: 1h00 to 5 hours*

*Grading: Intermediate to some very Advanced trails*

*Start: Desert Horse Inn Parking Area or Campsite*



*Colour Code: White Arrows*

*Distance: 14-34-48 km Aus Townlands Trails- north of tarred roads*

*Elevation Gain: 250-990m*

*Duration: 1h00 to 4 hours*

*Grading: Intermediate to some very Advanced trails*

*Start: Desert Horse Inn Parking Area or Campsite*



## Time Trial / Cross Country Route

*Colour Code: Grey Arrows*

*Distance: 11.5 km*

*Elevation Gain: 377m*

*Duration: 40min to 1.15 hours*

*Grading: Advanced*

*Start: Desert Horse Inn Parking Area*





#### **Activity 4: Trail Running**

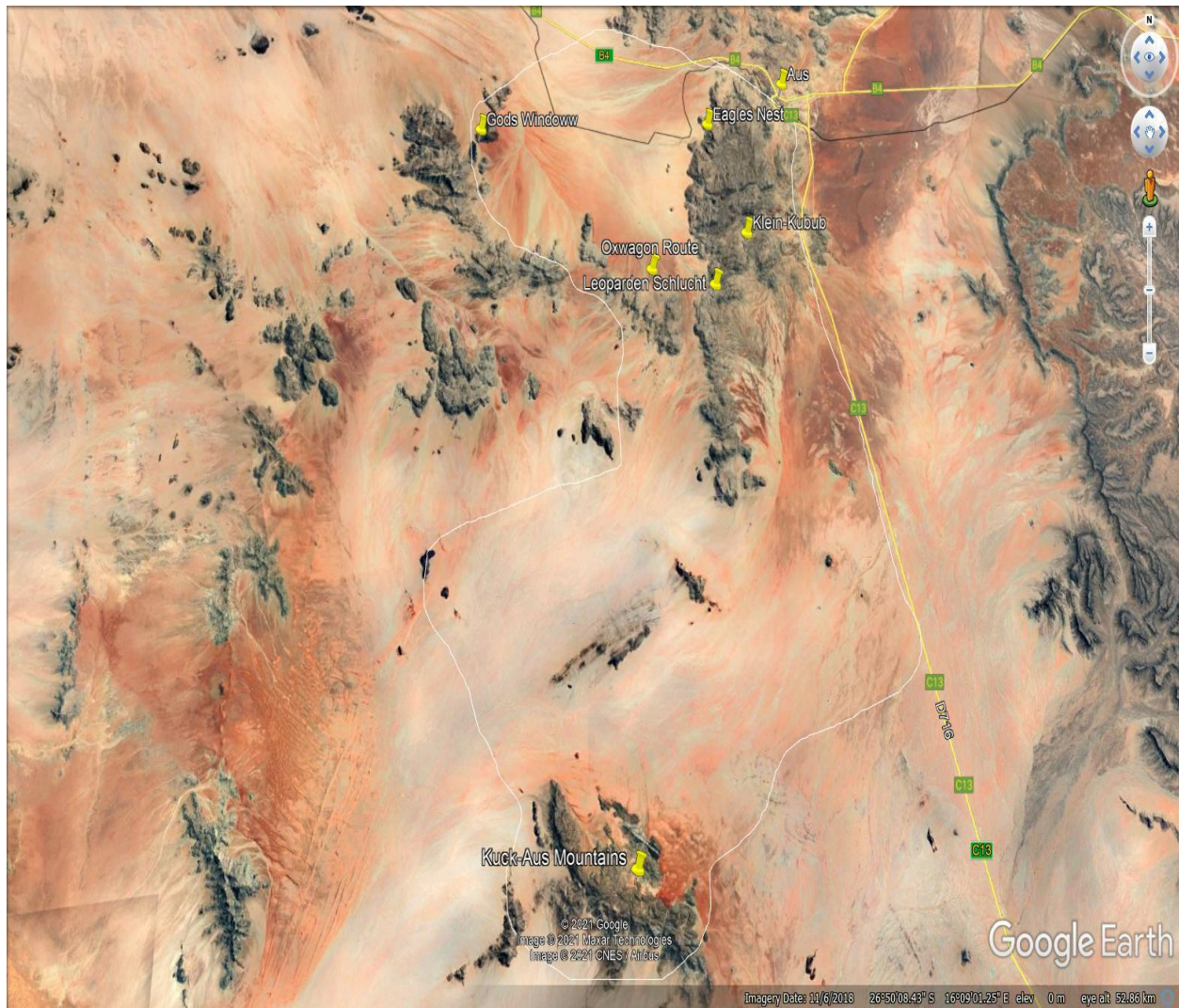
All the above mentioned Hiking trails or mountain trails can be utilized by trail runners. Ask for Piet to assist you to assess your skill & fitness level to ensure you take on the right trails and to plan your water points and supply.





**Activity 4: Guides Excursions by vehicle** <http://www.klein-aus-vista.com/activities/excursions-drives/>

The Gondwana Sperrgebiet Rand Park is 51 000ha large and borders the Namib Naukluft Park and the Tsau //Khaeb National Park that are located to our west, stretching to the Atlantic ocean



### 1: Scenic Sunset Drive:

These drives in the late afternoon present an opportunity to experience the incredible scenic beauty with sweeping vistas overlooking the vast empty plains of the Gondwana Sperrgebiet Rand Park at dusk. On the way you experience the bio-diverse Succulent karoo desert biome vegetation and landscapes of granite mountains, dry riverbeds and sweeping vistas overlooking the vast empty plains. We pass by and stop at several ramparts perfectly preserved, dating back to the First World War and the guide will revisit the history on what happened in Aus more than 100 years ago. We also stop at the Stone horse land art, with a 80x140m galloping horse that has been set in stone on the desert plains in honor of Namibia's century-old population of wild horses. The view is at ground level and just give one a glimpse of what it could look like, the viewpoint is from the mountain summit at an angle 559m away, elevated 141m higher than the drawing. We also stop at the entrance of the Ghost Valley to visit the 1936 bullet riddle Hudson Terraplein, your guide will give you the information of how diamond thieves met the law, trying to get away with their treasures. We will pass the Eagles nest chalets and cross into Heinrichsvelde farm and so a circle route crossing the desert plains to stop at the Tweeling koppie for sunset. You may see ostriches, Oryx or Kudus on the drive and if you are lucky and travel at the right time after occasional soft fall or winter rains a sea of bright flowers in the vast plains of the southern Namib can be experienced. Enjoy the desert sunset with a drink of your choice, pre-ordered, served with a cheese platter, amidst the setting sun in the vast and quiet Namib.

Rate valid from 1 January 2021 - 31 December 2021	<b>N\$ 450.00 pp, minimum 3 pax</b>
Rate valid from 1 January 2022 - 31 December 2022	<b>N\$ 475.00 pp minimum 3 pax</b>



## **2: Half Day to Kubub, Gondwana Sperrgebiet Rand Park**

(min. 4 persons per excursion)- 48 h in advance for bookings required

Starting time can be either in the morning or in the afternoon- duration 4 hours

To the east the park (510 km<sup>2</sup>) borders on the Nama Karoo, and to the north on the dune sea of the Namib and to the west the pro-Namib, Garub plains where the Wild Horses roam. If you are lucky and travel at the right time after occasional soft fall or winter rains a sea of bright flowers in the vast plains of the southern Namib can be experienced.

This route follows partly the history Ox wagon route through the Aus mountains onto the Namib plains. On the way you experience the bio-diverse Succulent karoo desert biome vegetation and landscapes of granite mountains, dry riverbeds and vistas overlooking the vast empty plains. Stop at a San cave with Rock Art in the Aus Mountains. Visit also at Klein-Kubub the old wells and drinking troughs where the Oxen drank water after they crossed the desert. Try to image the hardship and satisfaction of the first pioneers and transporters in the late 1800 when it took 7 days to cross the Namib desert from the coast to Aus.

**Alternatively**, one can just do the Gods Window drive. The Gods Window route follows the foot slopes of the Aus mountains crossing the Namib plains, to the western part of our park, up a large non moveable sand dune elevated one much higher than the surrounding landscape. One has stunning views 360 degrees with quiver trees in the fore ground and the wide expansive landscapes of granite mountains, dry riverbeds and vistas overlooking the vast empty plains. Return back to the lodge via the desert plains again.

Rate valid from 1 January 2021 - 31 December 2021	<b>N\$ 750.00 pp minimum 3 pax</b>
Rate valid from 1 January 2022 - 31 December 2022	<b>N\$ 800.00 pp minimum 3 pax</b>

## **3: Full Day to Kubub, Gondwana Sperrgebiet Rand Park, God's Window**

(min. 4 persons per excursion) 48 h in advance for bookings required

Starting time in the morning - duration 8 hours

To the east the park (510 km<sup>2</sup>) borders on the Nama Karoo, and to the north on the dune sea of the Namib, where the Wild Horses roam. If you are lucky and travel at the right time



after occasional soft fall or winter rains a sea of bright flowers in the vast plains of the southern Namib can be experienced.

This route follows partly the history Ox wagon "Bayweg" route passing through the Aus mountains onto the Namib plains to Gods Window. On the way you experience the bio-diverse Succulent karoo desert biome vegetation and landscapes of granite mountains, dry riverbeds and sweeping vistas overlooking the vast empty plains. Stop at a San cave with Rock Art in the Aus Mountains. Visit also at Klein-Kubub the old wells and drinking troughs where the Oxen drank water after they crossed the desert. Try to image the hardship and satisfaction of the first pioneers and transporters in the late 1800 when it took 7 days to cross the Namib desert from the coast to Aus.



The Gods Window route follows the foot slopes of the Aus mountains crossing the Namib plains, to the western part of our park, up a large non moveable sand dune elevated one much higher than the surrounding landscape. One has stunning views 360 degrees with quiver trees in the fore ground and the wide expansive landscapes of granite mountains, dry riverbeds and vistas overlooking the vast empty plains. Return back to the lodge via the desert plains again.





Rate valid from 1 January 2021 - 31 December 2021	<b>N\$ 1100.00 pp minimum 3 pax</b>
Rate valid from 1 January 2022 - 31 December 2022	<b>N\$ 1200.00 pp minimum 3 pax</b>

### **Drive schedules:**

#### **December, January, February**

##### **Start Times:**

Sunset Drives: DHI at 5 pm & at Eagles Nest 5.15 pm

Half day Sunset drives: DHI at 4 pm & at Eagles Nest 4.15 pm

Full day Drives: DHI at 7.30 am

#### **March, April:**

##### **Start Times:**

Sunset Drives: DHI at 4.30 pm & at Eagles Nest 4.45 pm

Half day Sunset drives: DHI at 3.30 pm & at Eagles Nest 3.45 pm

Full day Drives: DHI at 7.30 am

#### **May, June, July, August**

##### **Start Times:**

Sunset Drives: DHI at 4.00 pm & at Eagles Nest 4.15 pm

Half day Sunset drives: DHI at 3.00 pm & at Eagles Nest 3.15 pm

Full day Drives: DHI at 7.30 am

## September, October, November

### Start Times:

Sunset Drives: DHI at 4.30 pm & at Eagles Nest 4.45 pm

Half day Sunset drives: DHI at 3.30 pm & at Eagles Nest 3.45 pm

Full day Drives: DHI at 7.30 am

### **5: Self Drive Day trips to the Wild Horses, Lüderitz and Kolmanskop-**

**Lüderitz is just 120 km away and the ghost town of Kolmanskop only 115 km (tar road).**

Klein-Aus Vista is the ideal starting point for a trip to both places. 20 km from Aus, on the way to or back from Luderitz, visit the Garub water hole where the wild horses and several other animals of the desert plains can be found. The Wild Horses of the Namib have roamed this harsh habitat since 1915 and are an experience one should not miss.

#### **Visiting hours Kolmanskop:**

Monday to Saturday: 8:00 to 14:00

Sunday and public holiday: 8:00 to 13:00

**Guided tours** (45-60min tours offered in English and German)

Monday to Saturday: 9:30 and 11:00

Sunday and public holiday: 10:00